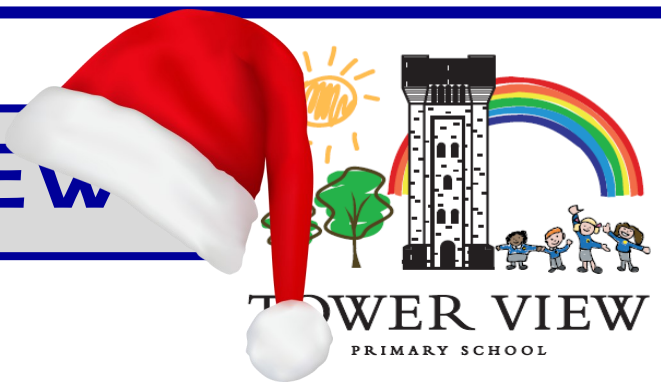


TOWER VIEW NEWS



Dear parents/ carers

Christmas is in full swing!

With Christmas songs being learnt and the Reception/ Year 1/ Year 2 Nativity performance rehearsals in full swing, there is really no better place to get ready for Christmas than a primary school!

This newsletter should give you all you need to know about what is coming up in the next 2 weeks

before the end of our first term—I can't quite believe we're already nearly there!

Please do read the newsletter to make sure you are aware of all the key dates and events coming up!

Best wishes

Graham Lobb

Upcoming Dates:

Tuesday 6th: Year 1 History of Toys Day

Tuesday 6th: Experience Christmas at St Marks for Reception

Wednesday 7th: Year 4 World war 2 Day

Wednesday 7th: Experience Christmas at St Marks for Reception

Thursday 8th: Christmas Concert at St Marks 7:30pm (see poster on the third page)

Friday 9th: PTFA Raffle Draw—2pm on the KS2 playground—Hot Chocolate available (please hang around to see if you've won!!)

Monday 12th: R/1/2 Nativity Dress rehearsal to school.

Tuesday 13th: R/1/2 Nativity 10:00am (tickets reqd)

Wednesday 14th: R/1/2 Nativity 2:00pm (tickets reqd)

Thursday 15th: Christmas Lunch and Party Day (wear party clothes!)

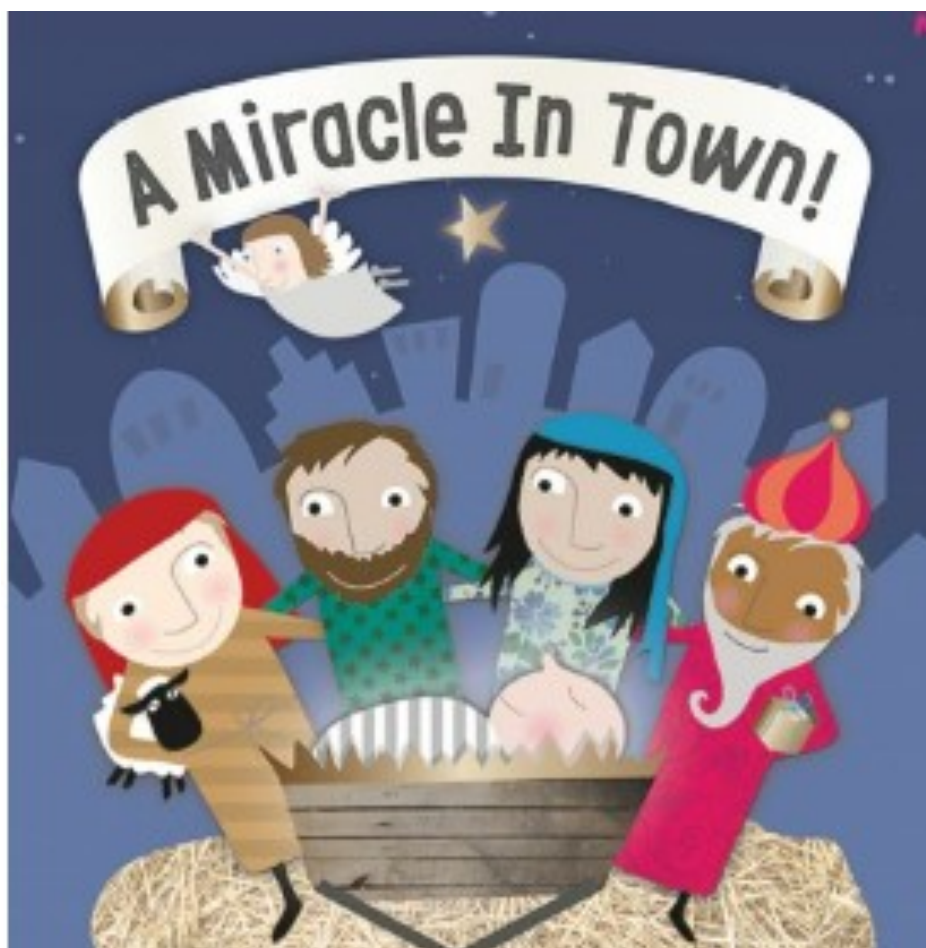
Friday 16th: Carol Service at St Mark's 10:00am (school only due to space)

Friday 16th: School breaks up for Christmas 2:00pm (please note Out of School Club closes at 3:30pm)

January

Wednesday 4th: Back to School





Reception/ Year 1 and Year 2 are working really hard at getting their performance ready for school and parents.

Remember—to come to the performances on Tuesday 13th or Wednesday 14th you do need tickets.

These are free and available from the office—please see the letter sent.

Christmas Gifts

Staff here are always very grateful for the gifts that get bought for them at Christmas. This year, as times are so hard for so many, please feel no pressure to do anything for any staff member. If you would like to show your appreciation to the staff at Christmas—we would prefer a donation to a local food bank— we will have a donation box by the office if you would like to do this....

Coming in to school

If you need to come into school for any reason in the morning—please do come in through the main office and not one of the other doors which are open for children—thank you.



PTFA Raffle

Please make sure all sold tickets are returned by Friday 9th December in the morning.

Remember—all money raised by the PTFA goes to support the school.

The draw will be made at 2pm on the KS2 playground Friday 9th December—there will be hot chocolate for sale to keep you warm while the draw is done!

Scarlet Fever/ Strep A

I'm sure many of you have heard about Scarlet fever/ Strep A and the danger it can pose in the press over the weekend.

We have had cases of Scarlet Fever in school (which is not uncommon) and these have been very mild.

Try not to worry— usually Scarlet fever is very mild. But there is more information on Scarlet Fever [here](#) and Strep A [here](#)

If you think your child has Scarlet Fever—please keep consult your doctor and keep them off school until they feel better and have been taking the antibiotics for 24 hours.

Thursday 8th December 2022
A Christmas Concert
 Presented by:


**Burton
Concert Band**


**Tower View
Entertainers**

St Mark's Church, Winshill
7.30pm, doors open at 7pm

Tickets: £6 or 2 for £10
 1 child under 10 free with every paying adult!

P Church car park capacity is limited. Additional parking available on West Street P

Band Conductor: David Haines. Band Leader: Kate Fox
 Contact us through our website or social channels
www.BurtonConcertBand.co.uk

Tickets available through the office—all welcome!



Supper Club

181 Community Space, Hawfield Lane, Winhill

Please join us **4pm until 6pm**

Every Monday & Thursday we'll be serving a hot meal, tea and drinks in a warm space

Everyone's Welcome!

Suggested donation of £1
Take away service is also available

Under 18's must be accompanied by an adult, thank you.

 communityengagement@trentanddove.org
 trentanddove.org
 [TDCommunities](https://www.facebook.com/TDCommunities)



**HUG
A MUG**

TUESDAYS 9AM - 11AM

@ 181 Hawfield Lane

**JOIN US FOR A WARM WELCOME,
A HOT DRINK, AND A SLICE OF
TOAST OR A PIECE OF CAKE.
NO CHARGE BUT DONATIONS
WELCOME.**

Brunch Buddies

Weekly every Monday

181 Community Space, Hawfield Lane, Winhill DE15 0BY

Please join us, 9am - 12.30 pm
for brunch in a warm space

Suggested donation £1

Everyone's Welcome!

**or weekly if there's demand*

 communityengagement@trentanddove.org
 trentanddove.org
 [TDCommunities](https://www.facebook.com/TDCommunities)



**Trent
Dove**
Transforming Homes,
Lives & Communities

WINSHILL NEIGHBOURHOOD RESOURCE CENTRE

(Charity No.1158268)

Cost Of Living Crisis

We are here to help!

If you find yourself in need of any help with, food, toiletries, cleaning/ laundry products, nappies, sanitary wear etc. Please don't hesitate to contact us at the Centre.

Please either text: 07422514072
Or email:wnrc12@hotmail.co.uk

OR CALL: 01283 740871

Citizen's Advice- If you live in Winshill & need an appointment please contact us and we can refer you.

Families' Health and Wellbeing

School Nurse virtual drop in clinic

NHS
Midlands Partnership
NHS Foundation Trust
A Keele University Teaching Trust

Every
Thursday
from
3.30 - 4.30pm



Your School Nurse is here to help you feel healthy, happy and safe during your school years and to get the best from your education.

Join the link and talk to a School Nurse.
We provide a confidential and friendly service

mpft.live/schoolnurse



Do you need some help?

Debt support:

[CAP](#)—0800 3280006

Heating support:

[Beat the Cold](#)—0800 3892258

OFFICIAL

Community Safety Flash



FIND WARMTH THIS WINTER

Staffordshire Fire and Rescue Service are supporting our Community by opening some of our stations for you to come in and have a hot drink and keep warm.

We are aware that our local communities are facing tough decisions because of the cost of living crisis. We know that one of those decisions for many of our community is around eating healthily or heating.



Where are our Warm Spaces

Commencing Thursday 10th November

Thursday	10 th November 1:30pm -3pm	Lichfield Community Fire Station,
Friday	18 th November 1:30pm -3pm	Burton Community Fire Station,
Tuesday	22 nd November 1:30pm-3pm	Barton Under Needwood Community Fire Station,

Every Week thereafter
Until Further Notice



www.staffordshirefire.gov.uk



Staffordshire
Fire and Rescue Service
preventing • protecting • responding